

118 +/- Acres John Flatau
Washington, AC +/-

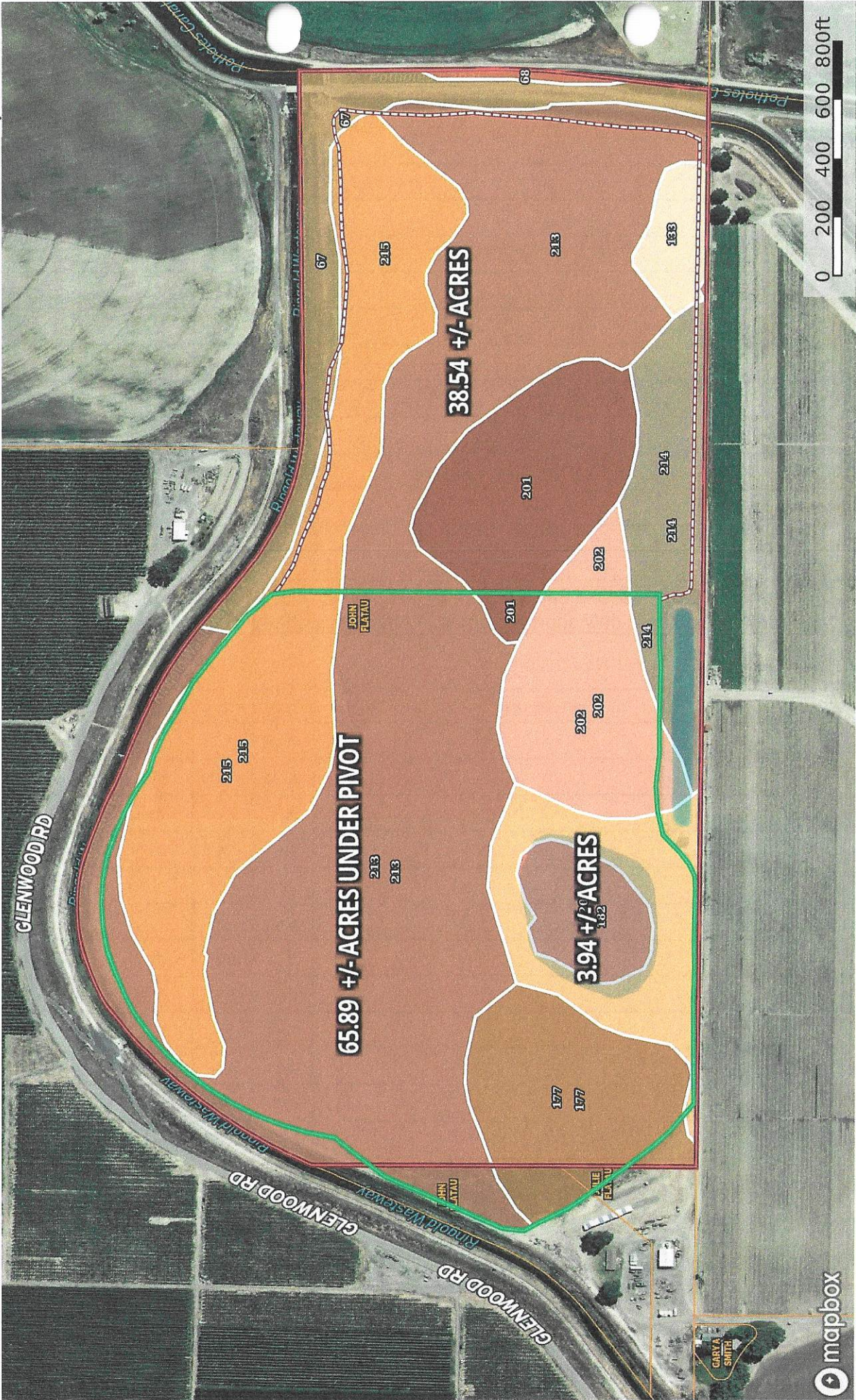


Rodney McConnell
P: (509) 222-9720
rodney@landandwildlife.com

1816 N. 20th Ave. Pasco, WA 99301

id.
The information contained herein was obtained from sources deemed to be reliable. Land id® Services makes no warranties or guarantees as to the completeness or accuracy thereof.

118 +/- Acres John Flatau
Washington, AC +/-



Rodney McConnell
P: (509) 222-9720

rodney@landandwildlife.com

1816 N. 20th Ave. Pasco, WA 99301



The information contained herein was obtained from sources deemed to be reliable. Land idb Services makes no warranties or guarantees as to the completeness or accuracy thereof.

 All Polygons 222.71 ac


SOIL CODE	SOIL DESCRIPTION	ACRES	%	CPI	NCCPI	CAP
213		96.54	43.35	0	-	-
215		39.5	17.74	0	-	-
201		16.6	7.45	0	-	-
202		15.3	6.87	0	-	-
177		14.95	6.71	0	-	-
182		12.48	5.6	0	-	-
214		10.88	4.89	0	-	-
67		6.46	2.9	0	-	-
220		6.14	2.76	0	-	-
133		3.44	1.54	0	-	-
68		0.42	0.19	0	-	-
TOTALS		222.7 1(*)	100%	-	-	-

(*) Total acres may differ in the second decimal compared to the sum of each acreage soil. This is due to a round error because we only show the acres of each soil with two decimal.

 Boundary 118.28 ac

SOIL CODE	SOIL DESCRIPTION	ACRES	%	CPI	NCCPI	CAP
213		49.95	42.23	0	-	-
215		20.18	17.06	0	-	-
201		8.3	7.02	0	-	-
202		7.87	6.65	0	-	-
177		7.17	6.06	0	-	-
182		6.62	5.6	0	-	-
214		6.59	5.57	0	-	-
67		6.26	5.29	0	-	-
220		3.07	2.6	0	-	-
133		1.85	1.56	0	-	-
68		0.42	0.36	0	-	-
TOTALS		118.2 8(*)	100%	-	-	-

(*) Total acres may differ in the second decimal compared to the sum of each acreage soil. This is due to a round error because we only show the acres of each soil with two decimal.

 Pivot 65.89 ac

SOIL CODE	SOIL DESCRIPTION	ACRES	%	CPI	NCCPI	CAP
-----------	------------------	-------	---	-----	-------	-----

213		29.76	45.17	0	-	-
215		11.95	18.14	0	-	-
177		7.78	11.81	0	-	-
202		6.51	9.88	0	-	-
182		5.86	8.89	0	-	-
220		3.07	4.66	0	-	-
214		0.49	0.74	0	-	-
201		0.47	0.71	0	-	-
TOTALS		65.89(*)	100%	-	-	-

(*) Total acres may differ in the second decimal compared to the sum of each acreage soil. This is due to a round error because we only show the acres of each soil with two decimal.

 Boundary 38.54 ac

SOIL CODE	SOIL DESCRIPTION	ACRES	%	CPI	NCCPI	CAP
213		16.83	43.67	0	-	-
201		7.83	20.32	0	-	-
215		7.37	19.12	0	-	-
214		3.8	9.86	0	-	-
133		1.59	4.13	0	-	-
202		0.92	2.39	0	-	-
67		0.2	0.52	0	-	-
TOTALS		38.54(*)	100%	-	-	-

(*) Total acres may differ in the second decimal compared to the sum of each acreage soil. This is due to a round error because we only show the acres of each soil with two decimal.