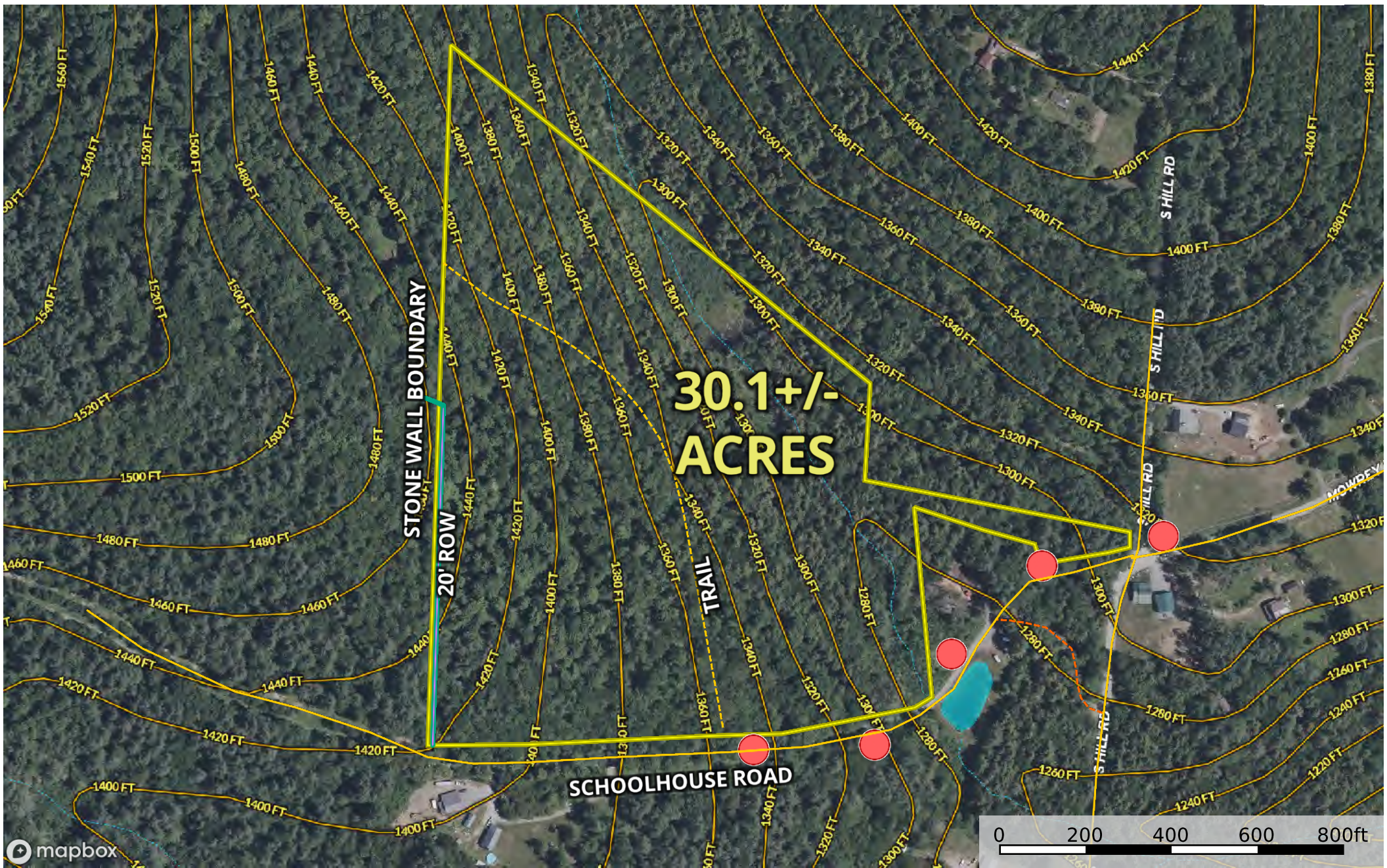


Jamaica, VT - 30.1 +/- Acres - 184 Schoolhouse Road
Windham County, Vermont, 31 AC +/-



- Utility Pole
- Bypass Road - Private
- 20' ROW for Rowe
- Existing Road / Trail
- Road / Trail
- Primary Road
- Property Boundary
- Stream, Intermittent
- River/Creek
- Water Body

The information contained herein was obtained from sources deemed to be reliable. Land id™ Services makes no warranties or guarantees as to the completeness or accuracy thereof.