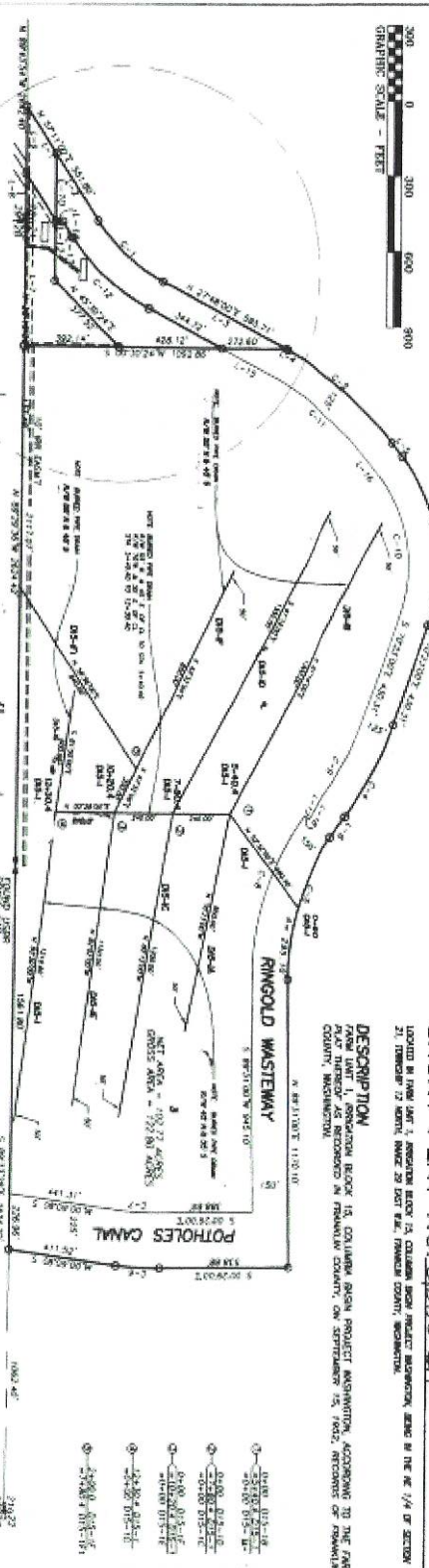


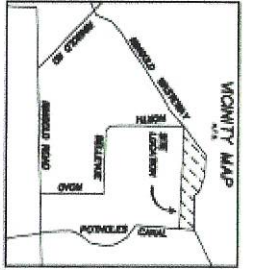
SHORT PLAT NO. 8003-84

LOCATED BY JOHN W. LAMBERT, REGISTERED SURVEYOR, WASHINGTON, DISTRICT OF COLUMBIA, IN THE NE 1/4 OF SECTION 24, TOWNSHIP 13 NORTH, RANGE 23 EAST, FRANKLIN COUNTY, WASHINGTON.

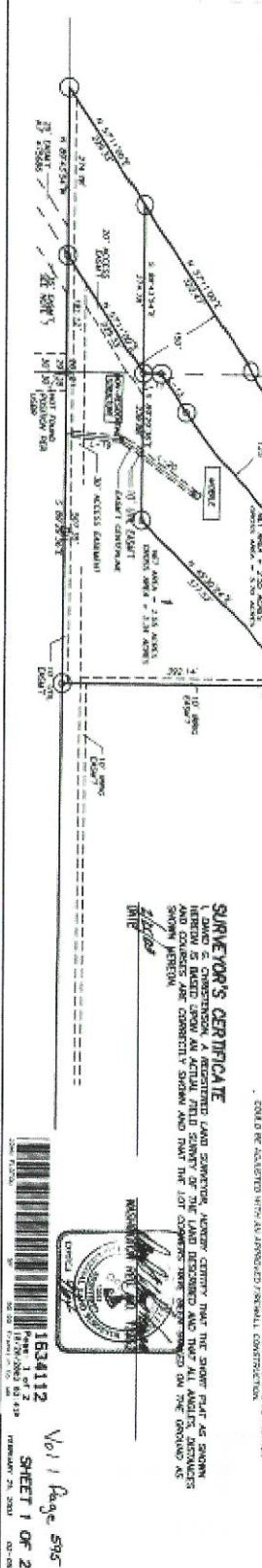
DESCRIPTION
 TOTAL BLOCK 14, SQUARED AREA PROJECT, WASHINGTON, ACCORDING TO THE RAW UNIT PLAT THEREOF AS RECORDED IN FRANKLIN COUNTY, ON FEBRUARY 23, 1980, BETWEEN OF FRANKLIN COUNTY, WASHINGTON.



CHAIN	BEARING	DISTANCE	BEARING	DISTANCE	BEARING	DISTANCE	BEARING	DISTANCE
C-1	S 89° 12' 30" W	142.15	S 89° 12' 30" W	142.15	S 89° 12' 30" W	142.15	S 89° 12' 30" W	142.15
C-2	S 89° 12' 30" W	302.32	S 89° 12' 30" W	302.32	S 89° 12' 30" W	302.32	S 89° 12' 30" W	302.32
C-3	S 89° 12' 30" W	443.47	S 89° 12' 30" W	443.47	S 89° 12' 30" W	443.47	S 89° 12' 30" W	443.47
C-4	S 89° 12' 30" W	142.15	S 89° 12' 30" W	142.15	S 89° 12' 30" W	142.15	S 89° 12' 30" W	142.15
C-5	S 89° 12' 30" W	142.15	S 89° 12' 30" W	142.15	S 89° 12' 30" W	142.15	S 89° 12' 30" W	142.15
C-6	S 89° 12' 30" W	142.15	S 89° 12' 30" W	142.15	S 89° 12' 30" W	142.15	S 89° 12' 30" W	142.15
C-7	S 89° 12' 30" W	142.15	S 89° 12' 30" W	142.15	S 89° 12' 30" W	142.15	S 89° 12' 30" W	142.15
C-8	S 89° 12' 30" W	142.15	S 89° 12' 30" W	142.15	S 89° 12' 30" W	142.15	S 89° 12' 30" W	142.15
C-9	S 89° 12' 30" W	142.15	S 89° 12' 30" W	142.15	S 89° 12' 30" W	142.15	S 89° 12' 30" W	142.15
C-10	S 89° 12' 30" W	142.15	S 89° 12' 30" W	142.15	S 89° 12' 30" W	142.15	S 89° 12' 30" W	142.15
C-11	S 89° 12' 30" W	142.15	S 89° 12' 30" W	142.15	S 89° 12' 30" W	142.15	S 89° 12' 30" W	142.15
C-12	S 89° 12' 30" W	142.15	S 89° 12' 30" W	142.15	S 89° 12' 30" W	142.15	S 89° 12' 30" W	142.15



- NOTES**
1. THE BEARING, DISTANCE OR AREA OF ANY LINE IS TO BE TAKEN AS SHOWN ON THIS PLAT UNLESS OTHERWISE SPECIFIED BY THIS SURVEYOR.
 2. ALL DISTANCES ARE TO BE TAKEN AS SHOWN ON THIS PLAT UNLESS OTHERWISE SPECIFIED BY THIS SURVEYOR.
 3. ALL BEARINGS ARE TO BE TAKEN AS SHOWN ON THIS PLAT UNLESS OTHERWISE SPECIFIED BY THIS SURVEYOR.
 4. ALL CORNERS ARE TO BE TAKEN AS SHOWN ON THIS PLAT UNLESS OTHERWISE SPECIFIED BY THIS SURVEYOR.
 5. ALL LOTS ARE TO BE TAKEN AS SHOWN ON THIS PLAT UNLESS OTHERWISE SPECIFIED BY THIS SURVEYOR.
 6. ALL AREAS ARE TO BE TAKEN AS SHOWN ON THIS PLAT UNLESS OTHERWISE SPECIFIED BY THIS SURVEYOR.
 7. ALL PERCENTAGES ARE TO BE TAKEN AS SHOWN ON THIS PLAT UNLESS OTHERWISE SPECIFIED BY THIS SURVEYOR.
 8. ALL DIMENSIONS ARE TO BE TAKEN AS SHOWN ON THIS PLAT UNLESS OTHERWISE SPECIFIED BY THIS SURVEYOR.
 9. ALL ANGLES ARE TO BE TAKEN AS SHOWN ON THIS PLAT UNLESS OTHERWISE SPECIFIED BY THIS SURVEYOR.
 10. ALL CURVES ARE TO BE TAKEN AS SHOWN ON THIS PLAT UNLESS OTHERWISE SPECIFIED BY THIS SURVEYOR.
 11. ALL TANGENTS ARE TO BE TAKEN AS SHOWN ON THIS PLAT UNLESS OTHERWISE SPECIFIED BY THIS SURVEYOR.
 12. ALL CHAINS ARE TO BE TAKEN AS SHOWN ON THIS PLAT UNLESS OTHERWISE SPECIFIED BY THIS SURVEYOR.



SURVEYOR'S CERTIFICATE
 I, JOHN W. LAMBERT, REGISTERED SURVEYOR, WASHINGTON, DISTRICT OF COLUMBIA, DO HEREBY CERTIFY THAT THE ABOVE IS A TRUE AND CORRECT COPY OF THE ORIGINAL SURVEY PLAT AS RECORDED IN FRANKLIN COUNTY, WASHINGTON, ON FEBRUARY 23, 1980, BETWEEN OF FRANKLIN COUNTY, WASHINGTON.

1634112
 SHEET 1 OF 2
 No. 1 Page 595

SHORT PLAT NO. 2003-34

LOCATED IN PLAT 1, SECTION 30, T. 33N. R. 30E, S. 23E, COULAMER BUSH PROJECT, WASHINGTON COUNTY, WASHINGTON

DESCRIPTION: 1.3 ACRES OF BUSH PROJECT, WASHINGTON COUNTY, WASHINGTON

OWNER'S CERTIFICATE
 I, COLLEEN TRUST BANK, AND JOHN W. FAYOU AND AILE L. FAYOU, HUSBAND AND WIFE, HEREBY CERTIFY THAT WE ARE THE OWNERS OF THE TRACT OF LAND DESCRIBED HEREON AND THAT WE HAVE THE RIGHT TO CONVEY THE SAME AS SHOWN AND THE DECLARATIONS ON THE SHORT PLAT ARE OWNED FOR THE USES SHOWN THEREON (COLLEEN TRUST BANK)

BY: Colleen Trust Bank BY: John W. Fayou
 JOHN W. FAYOU AILE L. FAYOU

ACKNOWLEDGMENTS

STATE OF WASHINGTON
 COUNTY OF BENTON
 I, CLARENCE H. HAYES, CLERK OF SAID COUNTY, DO HEREBY CERTIFY THAT I HAVE ON FILE SAID SHORT PLAT AND THAT THE SAME IS CORRECTLY FILED AS SHOWN AND THE DECLARATIONS ON THE SHORT PLAT ARE OWNED FOR THE USES SHOWN THEREON.

STATE OF WASHINGTON
 COUNTY OF BENTON
 I, CLARENCE H. HAYES, CLERK OF SAID COUNTY, DO HEREBY CERTIFY THAT I HAVE ON FILE SAID SHORT PLAT AND THAT THE SAME IS CORRECTLY FILED AS SHOWN AND THE DECLARATIONS ON THE SHORT PLAT ARE OWNED FOR THE USES SHOWN THEREON.

STATE OF WASHINGTON
 COUNTY OF BENTON
 I, CLARENCE H. HAYES, CLERK OF SAID COUNTY, DO HEREBY CERTIFY THAT I HAVE ON FILE SAID SHORT PLAT AND THAT THE SAME IS CORRECTLY FILED AS SHOWN AND THE DECLARATIONS ON THE SHORT PLAT ARE OWNED FOR THE USES SHOWN THEREON.

STATE OF WASHINGTON
 COUNTY OF BENTON
 I, CLARENCE H. HAYES, CLERK OF SAID COUNTY, DO HEREBY CERTIFY THAT I HAVE ON FILE SAID SHORT PLAT AND THAT THE SAME IS CORRECTLY FILED AS SHOWN AND THE DECLARATIONS ON THE SHORT PLAT ARE OWNED FOR THE USES SHOWN THEREON.

SURVEYOR'S CERTIFICATE
 I, DAVID S. CHRISTENSEN, A REGISTERED LAND SURVEYOR, HEREBY CERTIFY THAT THE SHORT PLAT AS SHOWN AND DECLARATIONS ON THE SHORT PLAT ARE CORRECTLY FILED AS SHOWN AND THE DECLARATIONS ON THE SHORT PLAT ARE OWNED FOR THE USES SHOWN THEREON.

REGISTER SURVEYING SERVICE, INC. P.S.
 701 N. BOX 6132
 121 E. ELY STREET
 BENTON, WASHINGTON 99320
 509-322-8770

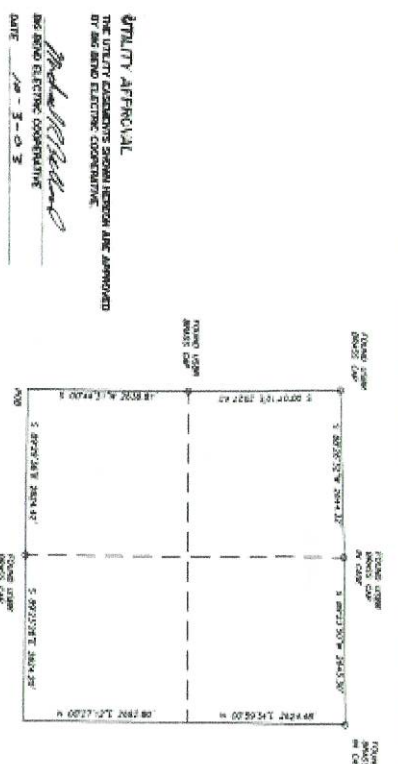
AUDITOR'S CERTIFICATE
 I, CLARENCE H. HAYES, CLERK OF SAID COUNTY, DO HEREBY CERTIFY THAT I HAVE ON FILE SAID SHORT PLAT AND THAT THE SAME IS CORRECTLY FILED AS SHOWN AND THE DECLARATIONS ON THE SHORT PLAT ARE OWNED FOR THE USES SHOWN THEREON.

RECORDS OF FRANKLIN COUNTY, WASHINGTON
 FILE NUMBER: 1834112

DATE: 02-28-03

DATE: 02-28-03

DATE: 02-28-03



UTILITY APPROVAL

THE UTILITY COMPANIES SHOWN HEREON ARE APPROVED BY THE BENTON ELECTRIC COOPERATIVE

DATE: 02-28-03

DATE: 02-28-03

DATE: 02-28-03

DATE: 02-28-03

DATE: 02-28-03

DATE: 02-28-03

DATE: 02-28-03

DATE: 02-28-03

DATE: 02-28-03

DATE: 02-28-03

DATE: 02-28-03

DATE: 02-28-03