

**Historic Hotel and Store Fronts Downtown  
Fredericktown  
104 East Main street  
Fredericktown, MO 63645**

**\$389,999  
0.520± Acres  
Madison County**



**MORE INFO ONLINE:**

**<https://livingthedreamland.com/>**



## Historic Hotel and Store Fronts Downtown Fredericktown Fredericktown, MO / Madison County

---

### SUMMARY

#### Address

104 East Main street

#### City, State Zip

Fredericktown, MO 63645

#### County

Madison County

#### Type

Commercial

#### Latitude / Longitude

37.560183 / -90.293757

#### Taxes (Annually)

3257

#### Acreage

0.520

#### Price

\$389,999

#### Property Website

<https://livingthedreamland.com/property/historic-hotel-and-store-fronts-downtown-fredericktown-madison-missouri/54619/>



**MORE INFO ONLINE:**

**<https://livingthedreamland.com/>**



## Historic Hotel and Store Fronts Downtown Fredericktown Fredericktown, MO / Madison County

---

### **PROPERTY DESCRIPTION**

Historic 3-Story Hotel with Retail Space in Downtown Fredericktown Own a piece of history! This grand 3-story hotel, built in 1890, offers a unique blend of historic charm and modern potential. Located in the heart of Fredericktown's vibrant downtown district, the property boasts over 16,000 square feet of space, including:

- 18 Hotel Rooms: Perfect for accommodating tourists, business travelers, or creating a boutique hotel experience.
- 5 Storefront Spaces: Generate rental income or open your own business in a prime downtown location with high foot traffic.

This stunning property exudes historic character, offering endless possibilities for redevelopment or restoration. Imagine transforming it into a luxurious hotel, bustling commercial center, or a combination of both. The possibilities are endless! Don't miss this opportunity to own a landmark property in Fredericktown's historic district. Contact us today for a showing!

**MORE INFO ONLINE:**

**<https://livingthedreamland.com/>**





**Historic Hotel and Store Fronts Downtown Fredericktown  
Fredericktown, MO / Madison County**

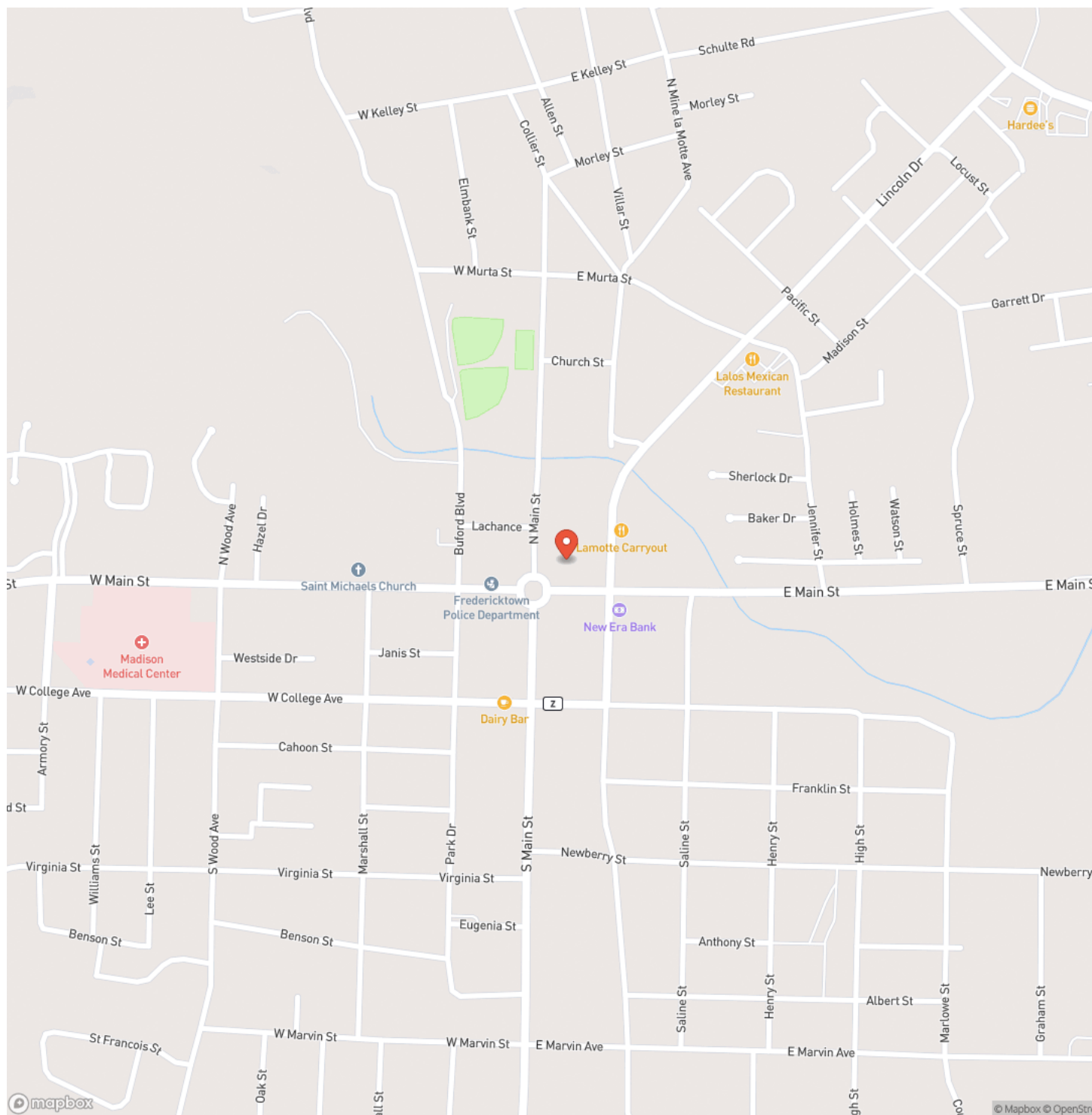
---



**MORE INFO ONLINE:**

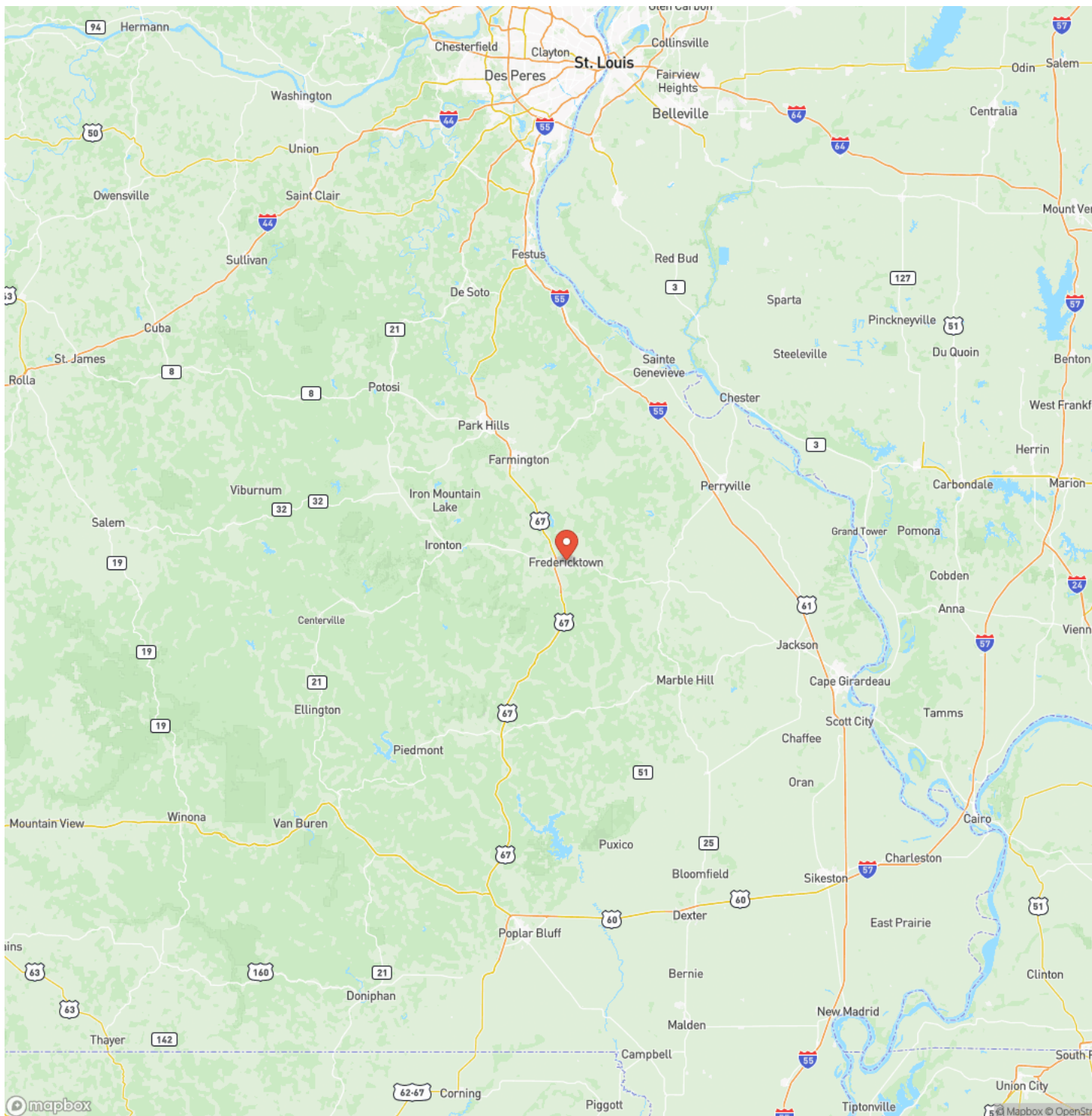
**<https://livingthedreamland.com/>**

## Locator Map



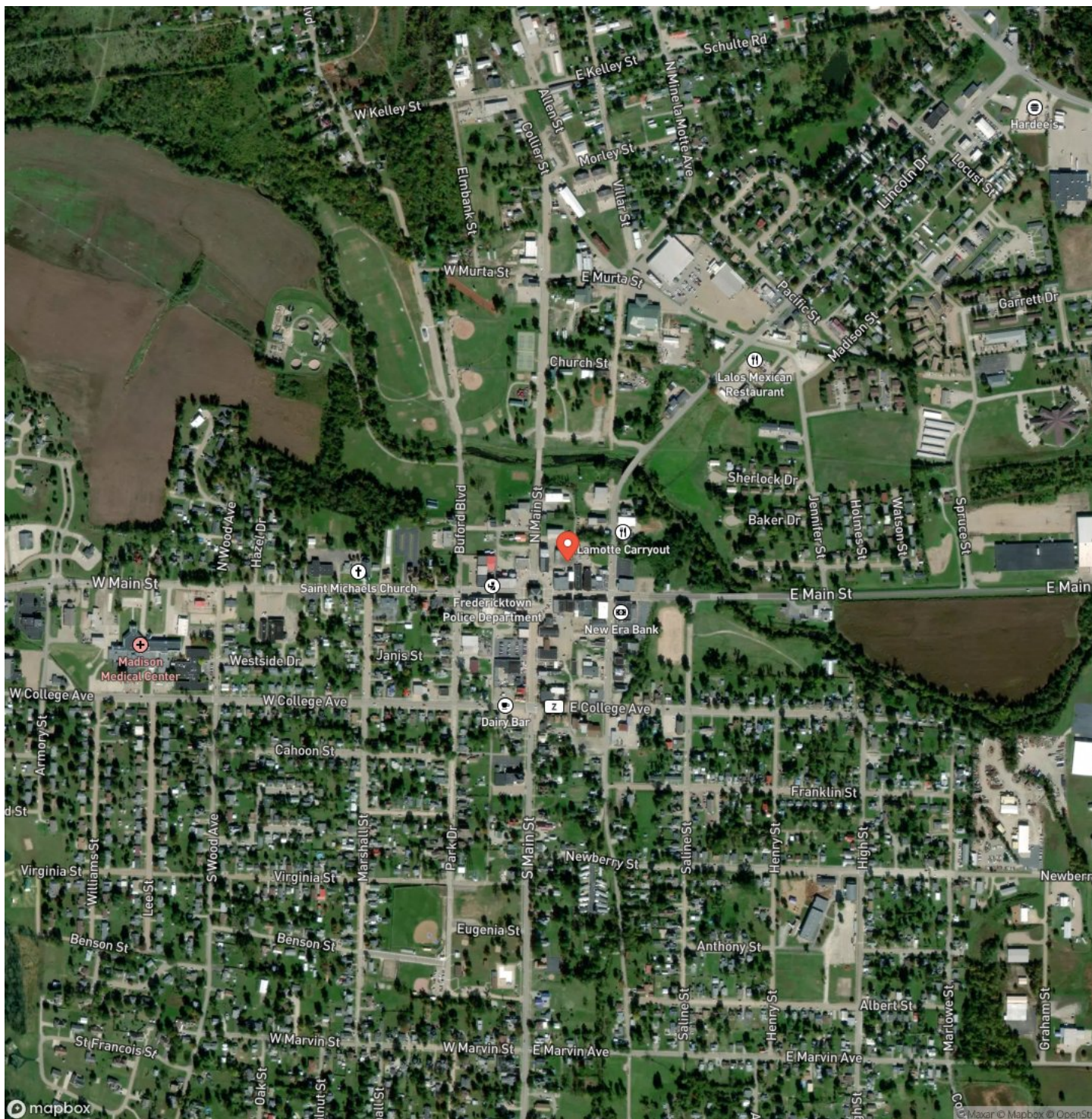


## Locator Map





## Satellite Map



## Historic Hotel and Store Fronts Downtown Fredericktown Fredericktown, MO / Madison County

## LISTING REPRESENTATIVE

**For more information contact:**



## Representative

Lance Cureton

## Mobile

(573) 561-4400

## Email

[lance@livingthedreamland.com](mailto:lance@livingthedreamland.com)

**Address**

515 S. Franklin St.

## City / State / Zip

Cuba, MO 65453

## NOTES

[illegible]

**MORE INFO ONLINE:**

**<https://livingthedreamland.com/>**



[illegible]

## **DISCLAIMERS**

Information in this brochure is provided solely for information purposes and does not constitute an offer to sell or advertise real estate outside the states in which broker or agent licensed. The information presented has been obtained from sources deemed to be reliable, but is not guaranteed or warranted by the agent, broker, or the sellers of these properties. This offering is subject to errors, omissions, prior sale, price change, correction or withdrawal from the market without notice. All references to age, square footage, income, expenses, acreage, carrying capacity, and land classification, etc. are approximate. Prospective buyers are chargeable with and expected to conduct their own independent investigation of the information and the property and to rely only on those results. Sellers reserve the right to accept or reject any and all offers without liability to any buyer or cooperating broker.

Maps are provided for illustration purposes only, the accuracy is not warranted. Parcels on interactive maps are not adjusted to match aerial backgrounds. This information is for reference purposes only and is not a legal document. Data maps contain errors. The seller and seller's agent are making known to all potential buyers that there may be variations between the location of the existing fence lines and the legal description of the deeded property. Seller and seller's agent make no warranties with regard to the location of the fence lines in relationship to the deeded property lines, nor does the Seller make any warranties or representations with regard to the specific acreage contained within the fenced property lines. Seller is selling the property in an "as is" condition, which includes the location of the fences as they exist. Boundaries shown on the accompanying maps are approximate, based on county parcel data. The maps are not to scale. The accuracy of the maps is not guaranteed. Prospective buyers are encouraged to verify fence lines, deeded property lines and acreages using a licensed surveyor at their own expense.





---

**Living The Dream Outdoor Properties**  
100 Chesterfield Parkway  
Chesterfield, MO 63005  
(855) 289-3478  
<https://livingthedreamland.com/>

---

