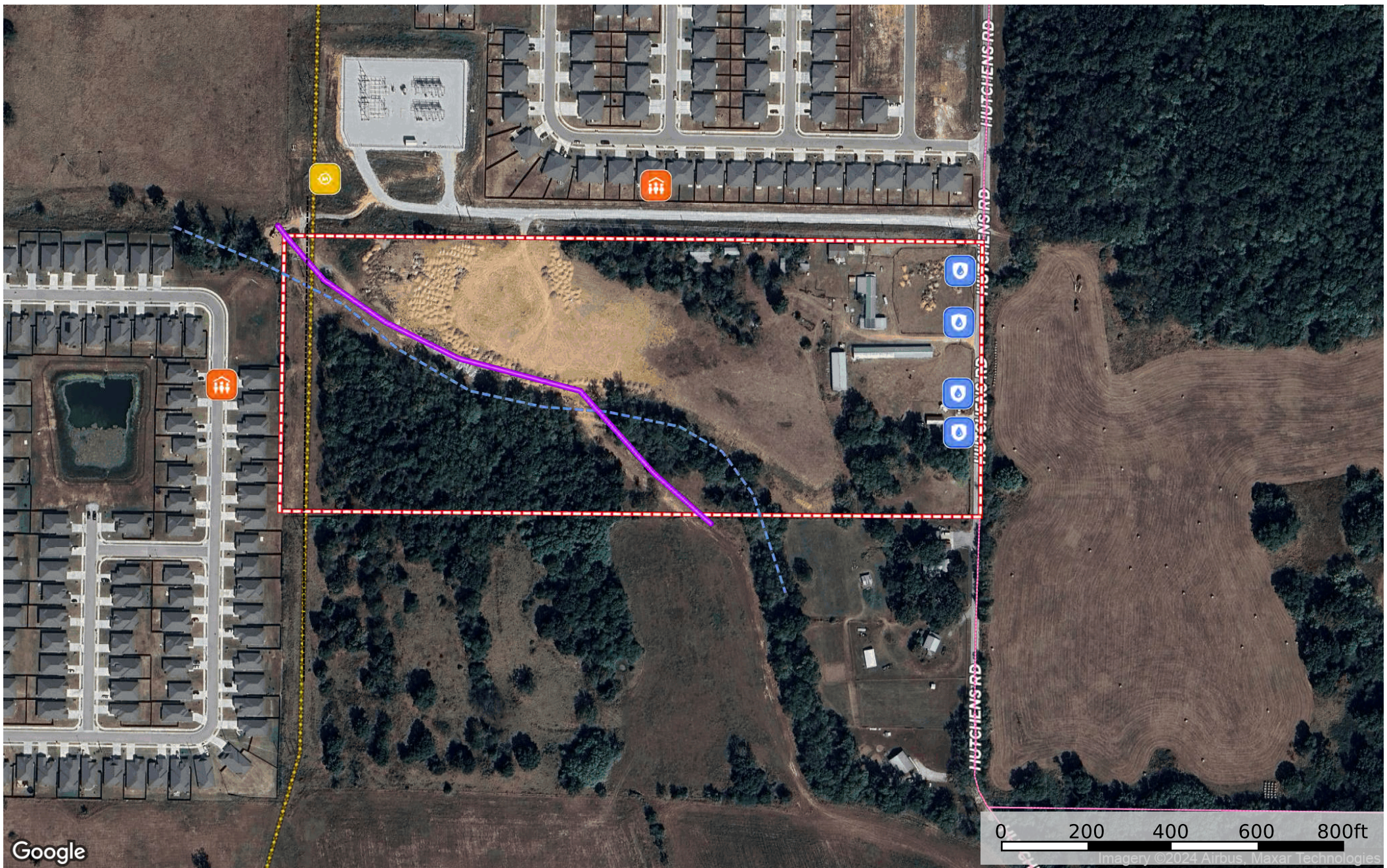


XNA Residential Development  
Benton County, Arkansas, 24.65 AC +/-



- Electrical Meter
- Multi Family
- Water Meter
- Transmission Line
- Pipeline
- Stream
- Boundary
- Voltage Unavailable
- Voltage 0 - 99 KV
- Voltage 100 - 161 KV
- Voltage 220 - 287 KV
- Voltage 345 KV
- Voltage 500 KV
- Voltage 735 KV+